

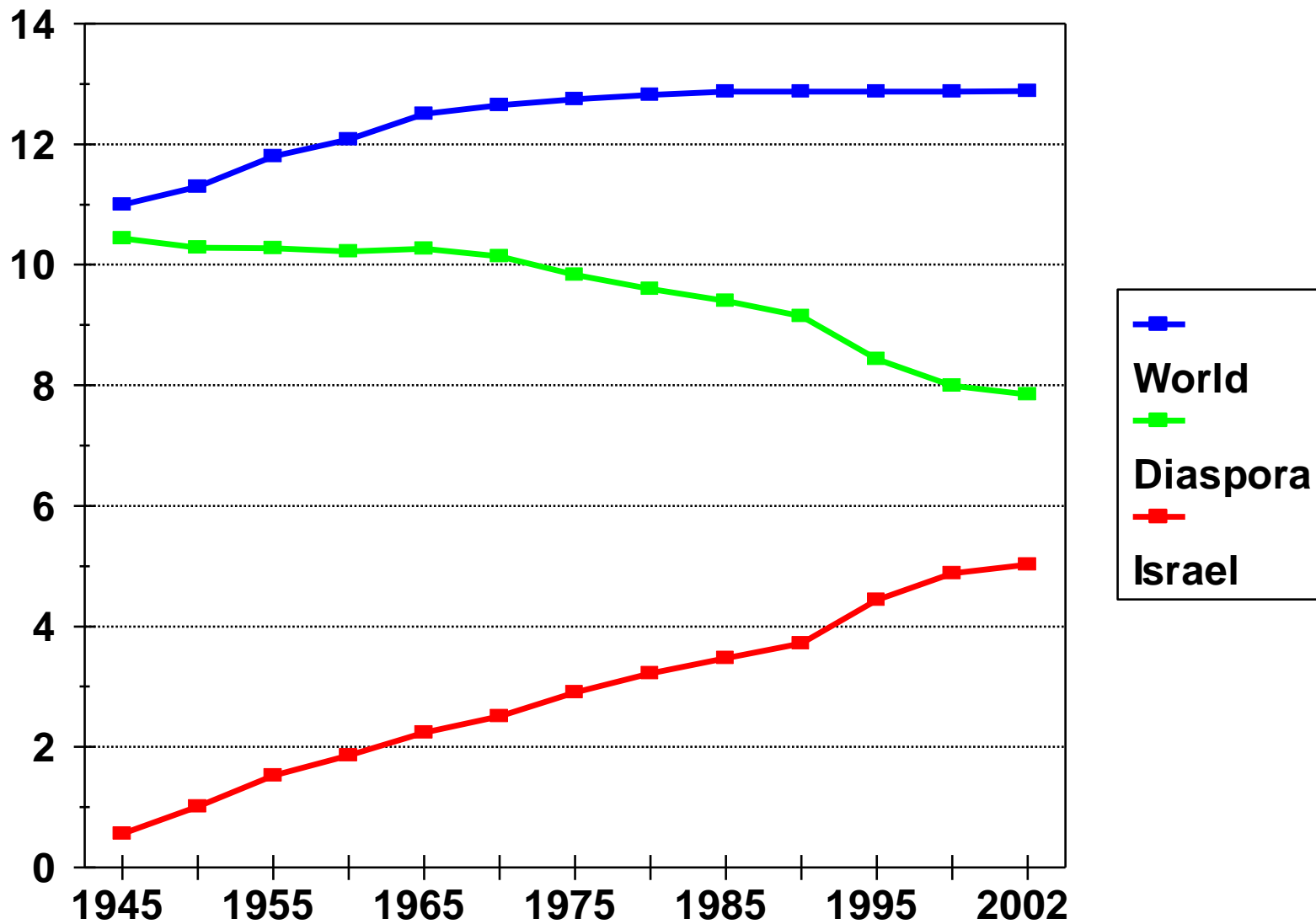
World Jewish Population: Trends, Prospects, Policies

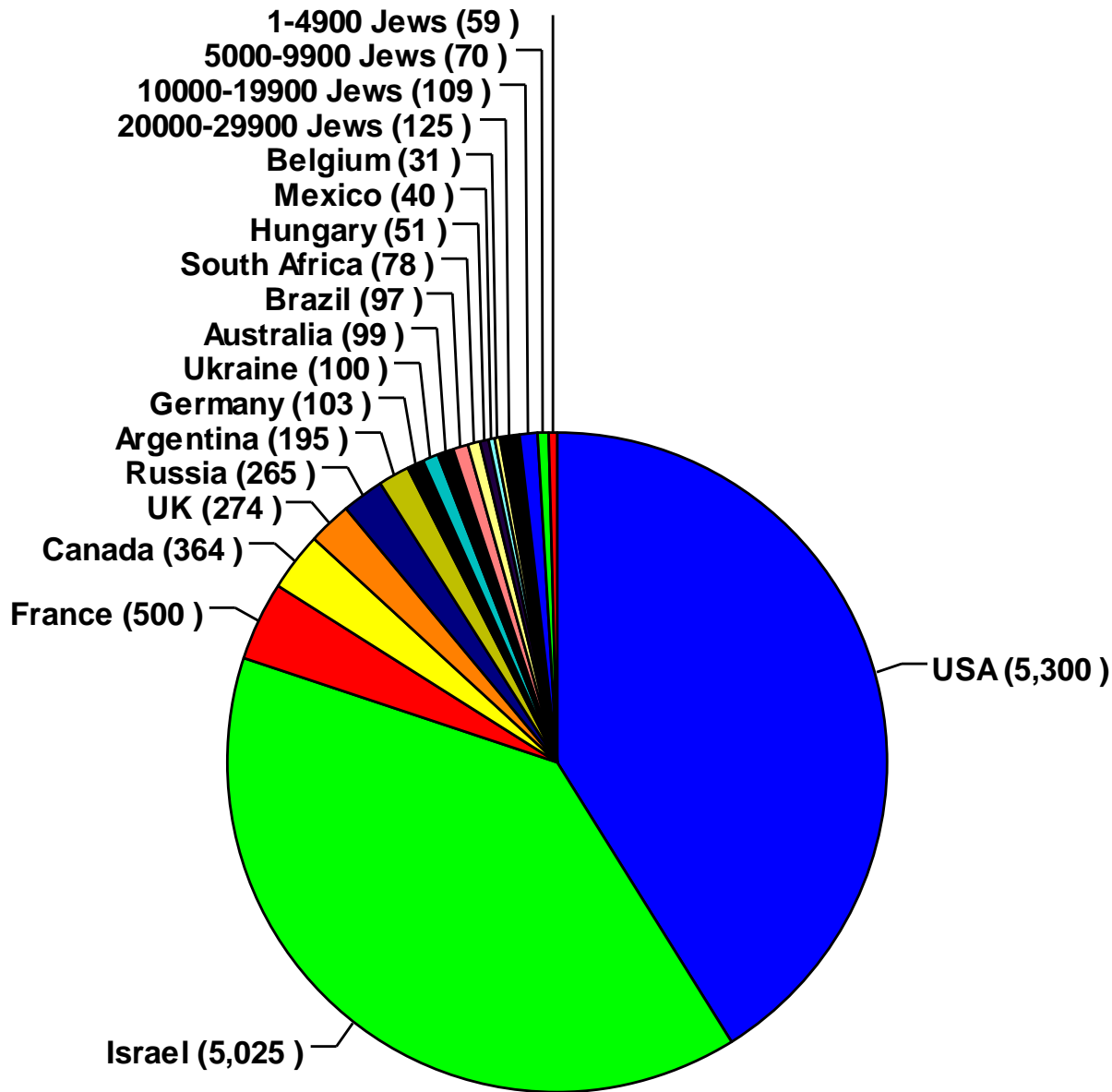
Prof. Sergio DellaPergola

**The A. Harman Institute of Contemporary Jewry
The Hebrew University of Jerusalem**

The Jewish People Policy Planning Institute

WORLD JEWISH POPULATION 1945-2002





LARGEST JEWISH POPULATIONS 2002 (Thsd)

Estimated Core Jewish Population, by Continents and Major Regions, 1970 and 2002

Region	1970		2002 ^a		%
	N.	%	N.	%	Change
World	12,645,200	100.0	12,877,100	100.0	1.8
Diaspora	10,063,000	79.6	7,852,100	61.0	-22.0
Israel	2,582,200	20.4	5,025,000	39.0	94.6
America	6,199,800	49.0	6,076,300	47.2	-2.0
North ^b	5,686,000	44.9	5,664,000	44.0	-0.4
Central, South	513,800	4.1	412,300	3.2	-19.8
Europe	3,231,900	25.6	1,539,500	12.0	-51.8
West	1,118,900	8.9	1,035,000	8.1	-7.5
Former USSR ^c	1,896,700	15.0	410,000	3.2	-78.4
Rest East, Balkan ^c	216,300	1.7	94,500	0.7	-56.3
Asia	2,936,400	23.2	5,069,900	39.4	72.7
Israel	2,582,200	20.4	5,025,000	39.0	94.6
Former USSR ^c	254,100	2.0	25,000	0.2	-90.2
Other	100,300	0.8	19,900	0.2	-80.2
Africa	207,100	1.6	87,200	0.7	-57.9
North ^d	82,600	0.6	7,400	0.1	-91.0
South ^e	124,500	1.0	79,800	0.6	-35.9
Oceania^f	70,000	0.6	104,200	0.8	49.0

Source: DellaPergola (2001).

Core and Enlarged Jewish Populations in Selected Countries

Country	Year	Core	Enlarged
USA	2001	5,300,000	9,2-10,000,000
France	2002	500,000	575,000
Russia	2001	275,000	520,000
Israel	2001	5,025,000	5,300,000

Source: US: NJPS, AJIS; Cohen (2002); Tolts (2002); Israel CBS (2002)

Recent Jewish population changes

Year	USA	France
~ 1990	NJPS 5,515,000	525,000
~ 2000	NJPS 5,300,000 AJIS 5,350,000	500,000
Difference	-165,000/-215,000	-25,000

Frequency of Aliyah by Countries, 2001



n = 74

• (Exponential Fit)

Recent Jewish Fertility Rates in France

Age	1970s	2002
30-39	1.8	1.67
40-49	2.7	2.22

Source: Bensimon-DellaPergola (1984); Cohen (2002).

United States, 2000/2001

52% of Jewish women aged 30-35 are childless

Recent Jewish Vital Statistics in the Russian Republic

Year	Births to Jewish mothers	Of which:		Jewish deaths
		Jewish fathers	Non-Jewish fathers	
1988	3,710	1,562	2,148	13,826
2000	613	169	444	8,218

Source: Tolts (2002)

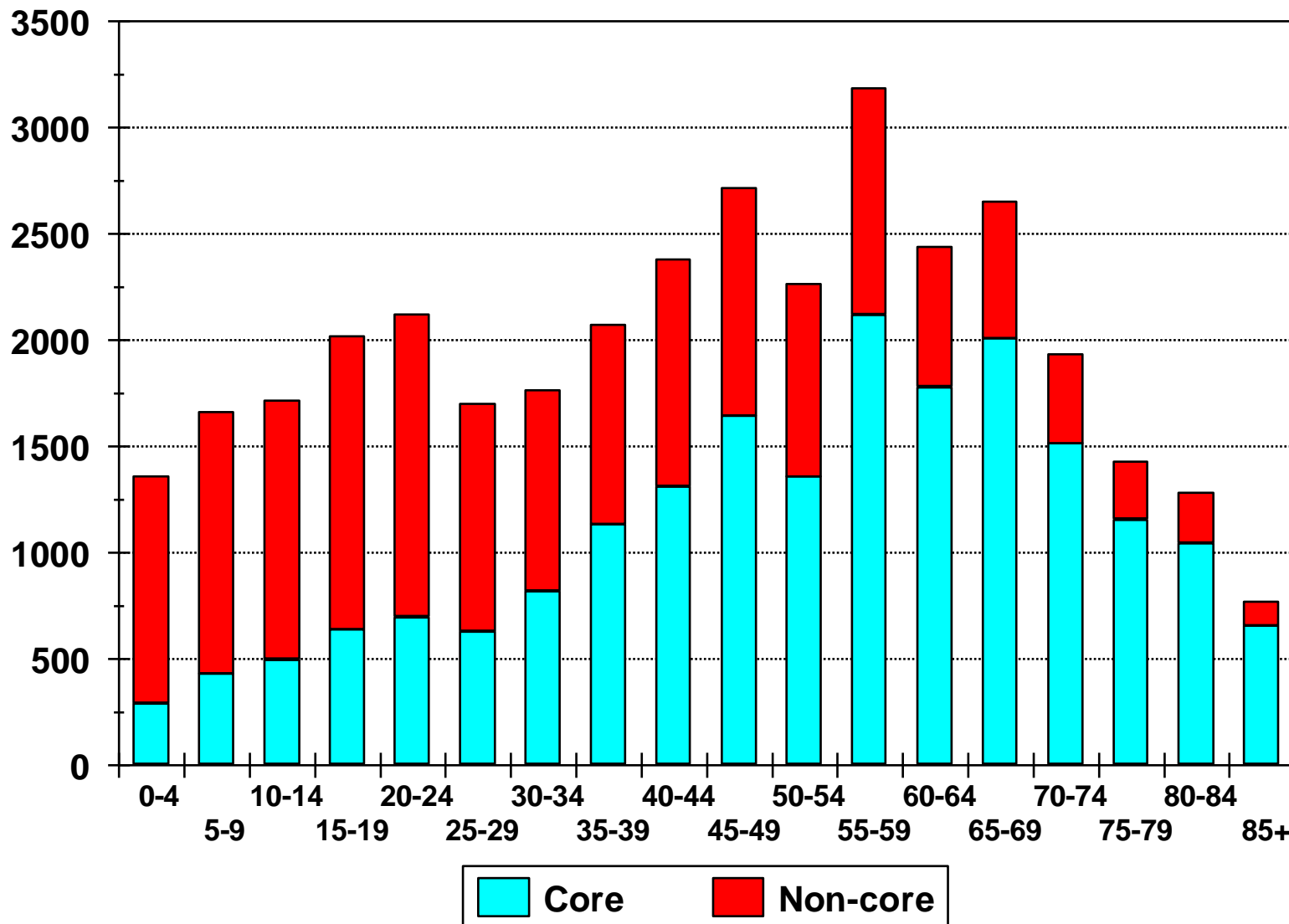
Recent Jewish Out-marriage Rates

Year of marriage	USA	Age	France 2002	Russia 1994
1985-1989	52% (NJPS)	30-39	37%	66%
1990-2001	51% (AJIS)	20-29	40%	78%

Source: Mayer-Kosmin (2002); Cohen (2002); Russia 1994 Microcensus.

Enlarged Jewish Population

Russian Republic, 1994 (5% sample)



World Core Jewish Population Projections Assuming Migration Rates As of Late 1990s and Various Levels of Fertility, by Major Regions, 2000-2050 - Thousands^a

Region	2000	2010	2020	2050
Medium fertility				
Total world	13,109	13,428	13,847	14,480
Diaspora	8,235	7,863	7,619	6,251
Israel	4,874	5,565	6,228	8,230
North America	6,065	6,025	5,980	5,036
Latin America	420	394	364	277
Europe	1,125	1,084	1,030	795
FSU	413	163	62	2
Asia, Africa, Oceania	212	196	183	141
<i>% in Israel^b</i>	37.2	41.4	45.0	56.8
Lower fertility				
Total world	12,944	12,935	13,002	12,026
Diaspora	8,137	7,586	7,161	5,153
Israel	4,807	5,349	5,841	6,873
<i>% in Israel^b</i>	37.1	41.4	44.9	57.2
Higher fertility				
Total world	13,273	13,916	14,698	17,286
Diaspora	8,332	8,140	8,084	7,544
Israel	4,940	5,777	6,614	9,741
<i>% in Israel^b</i>	37.2	41.5	45.0	56.4

^a Projection baseline: 1995. Minor discrepancies due to rounding.

^b Out of world total.

Source: DellaPergola, Rebhun, Tolts (2000).

Population in Israel/Palestine, by Major Ethnoreligious Groups, 2000-2050 - Thousands, Medium Projection^a

Year	Israel Jews	Israel Jews, enlarged ^b	Israel Arabs	Total Israel	West Bank	Gaza	Total Territories	Total Israel/Palestine
2000	4,969	5,168	1,178	6,346	1,845	1,128	2,973	9,319
2010	5,689	5,980	1,555	7,535	2,518	1,645	4,163	11,698
2020	6,368	6,697	1,976	8,673	3,338	2,342	5,680	14,353
2050	8,230	8,780	3,121	11,901	6,414	5,146	11,560	23,461

a Assumptions: Jewish fertility stable at 2000 levels; Arab fertility declining gradually to Jewish level by 2050; net international migration = 0. Not including foreign workers and undocumented residents.

b Including non-Jewish immigrants from FSU.

Source: DellaPergola (2001).

Percent of Jews^a Among Total Population in Israel/Palestine, 2000-2050, Medium Projections

Year	Israel plus territories	Israel without territories	Israel with territorial exchange^b
2000	55	81	87
2010	51	79	86
2020	47	77	84
2050	37	74	81

a Including non-Jewish immigrants from FSU (footnote b in Table 4). Not including foreign workers and undocumented residents.

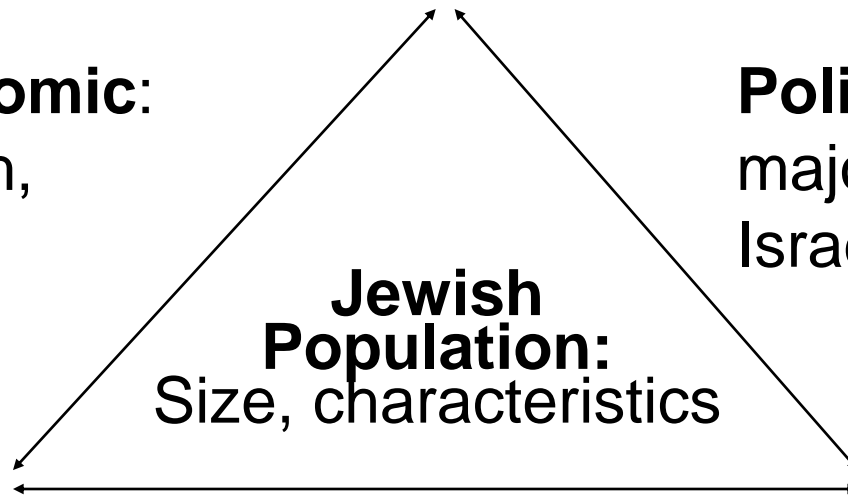
b Assuming an exchange between Israel and the Palestinian Authority of a territory of about 250 km² in central Israel and East Jerusalem including significant population minorities.

Source: DellaPergola (2002)

Main Jewish Population Policy Dimensions

Socioeconomic:
aliyah, klitah,
welfare

Political: Jewish
majority/minority in
Israel, Territories



Identificational: Jewishness
of group's boundary, contents

[Back to Table of Contents](#)