



Strategic Transportation Planning in Israel

Dr. Nir Sharav

1

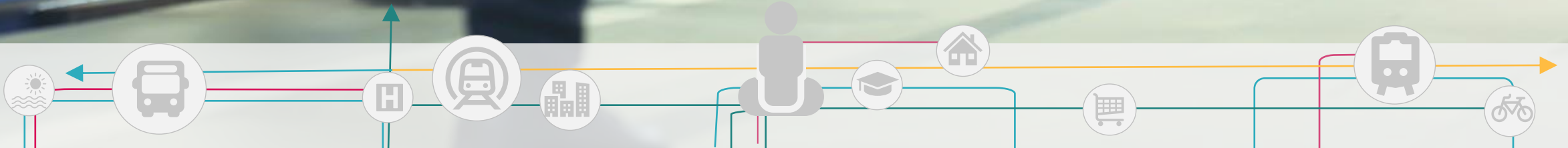
Travel in Israel
in a Nutshell

2

The Strategic
Approach

3

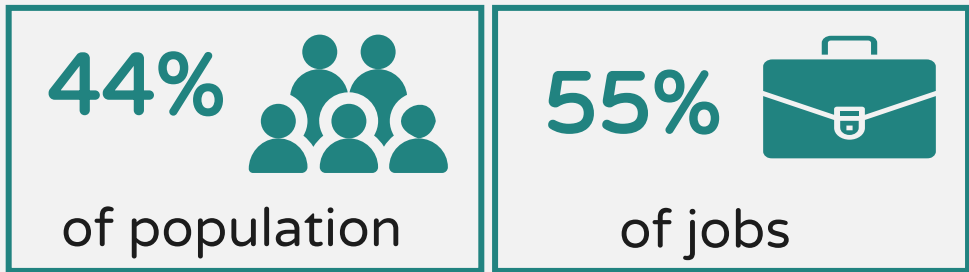
Selected Plans



Travel In Israel

Travel Demand

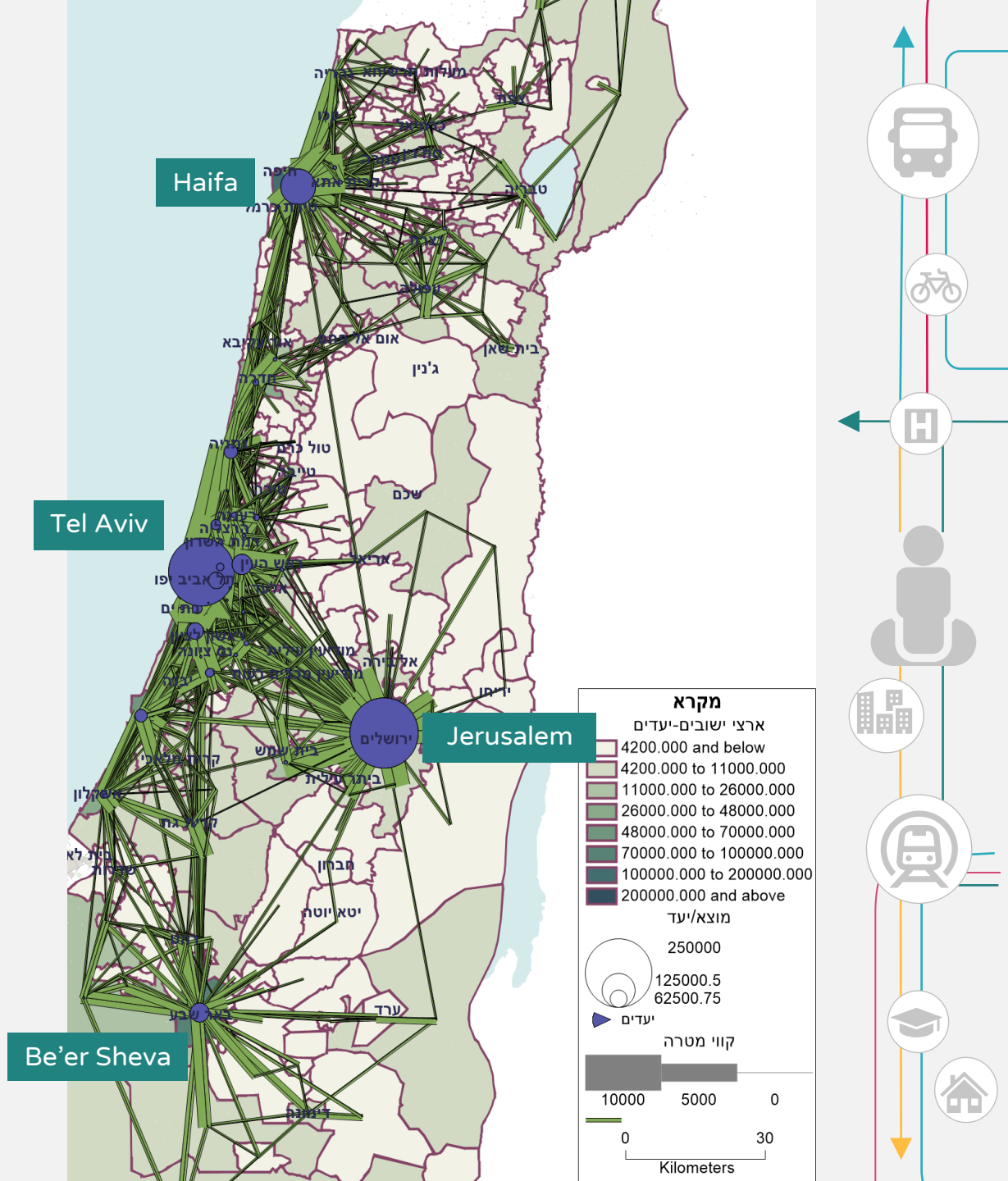
- > Population: **9.5 million**
- > Urban population: **Over 90%**
- > **4** Metropolitan population share: **75%**
- > Tel Aviv is the business center



Most trips are metropolitans

Most long trips are between metropolitans

National cellular Survey data, 6-9 AM, 2018

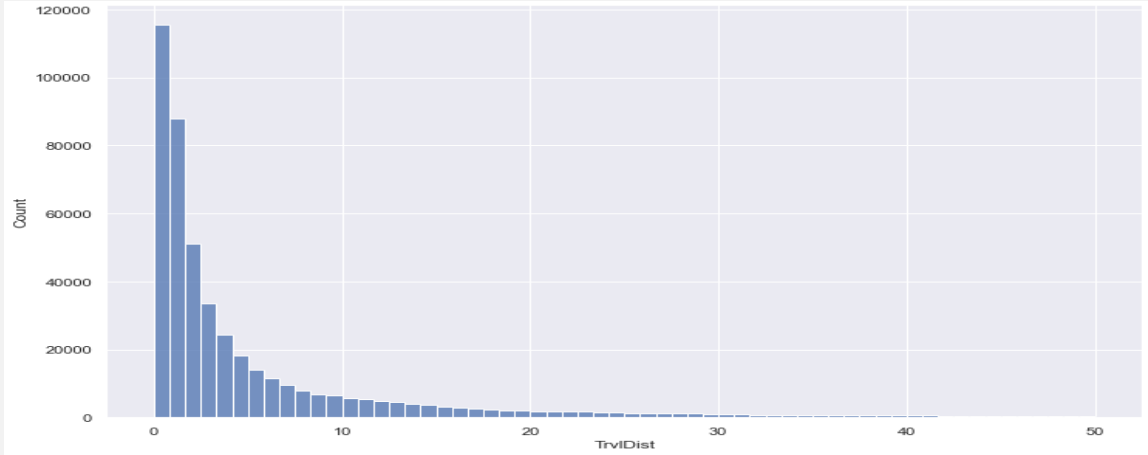


Travel In Israel

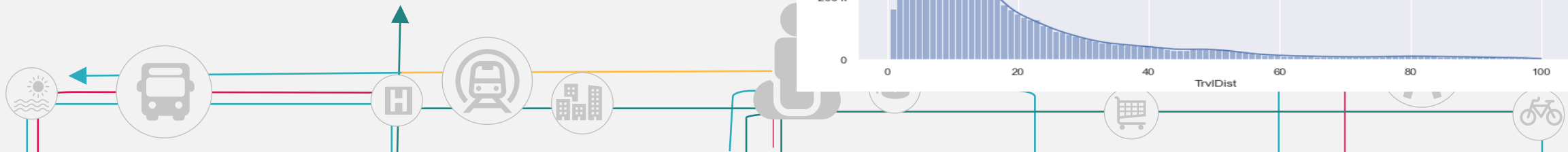
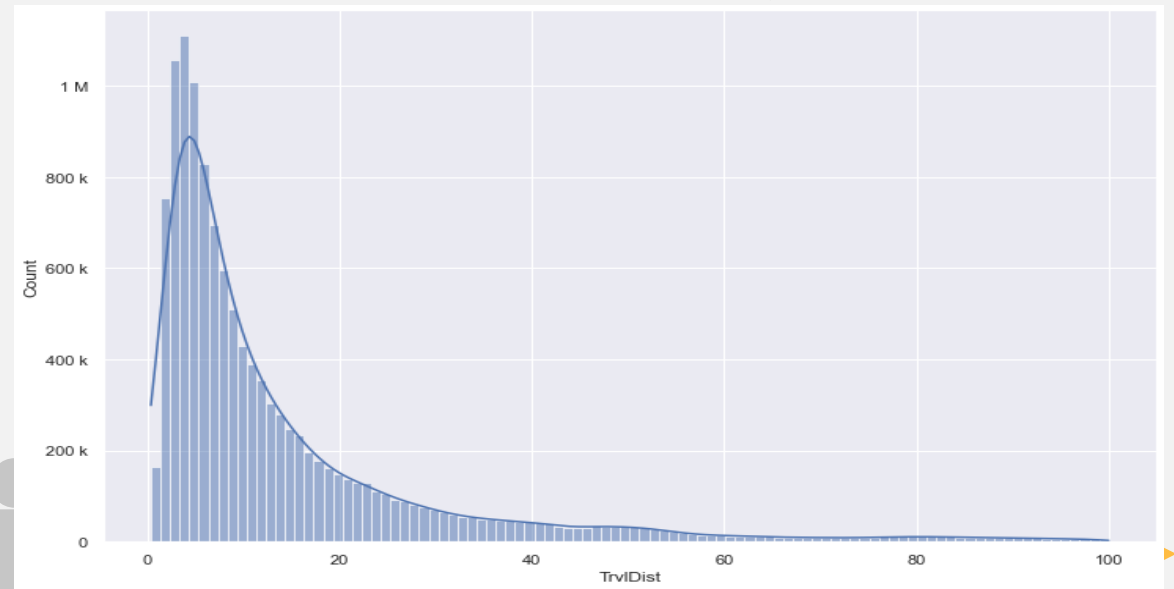
Travel Distance

- More than 70% of motorized trips are less than 5 km, (THS 2017)
- 60% of motorized trips are less than 10 km, (Cellular survey 2018)

Distribution of motorized trips by travel distance, Israel unified THS



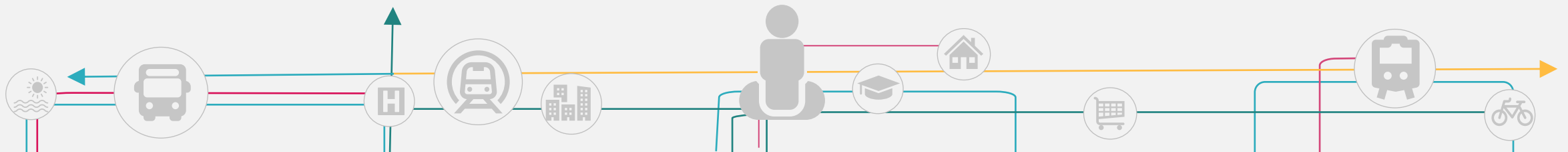
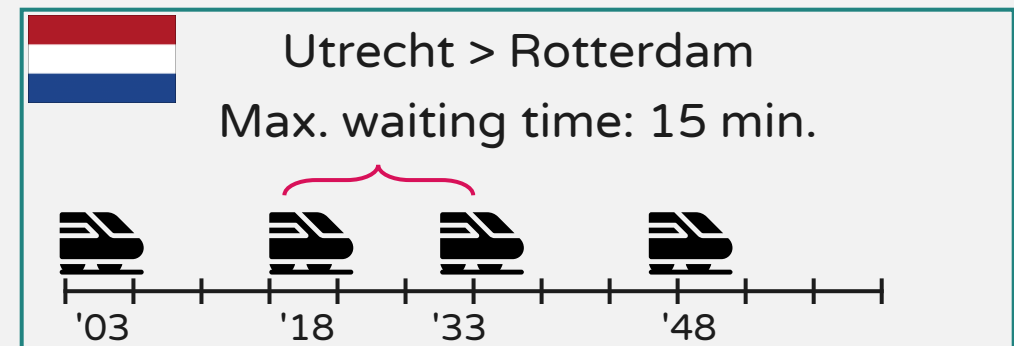
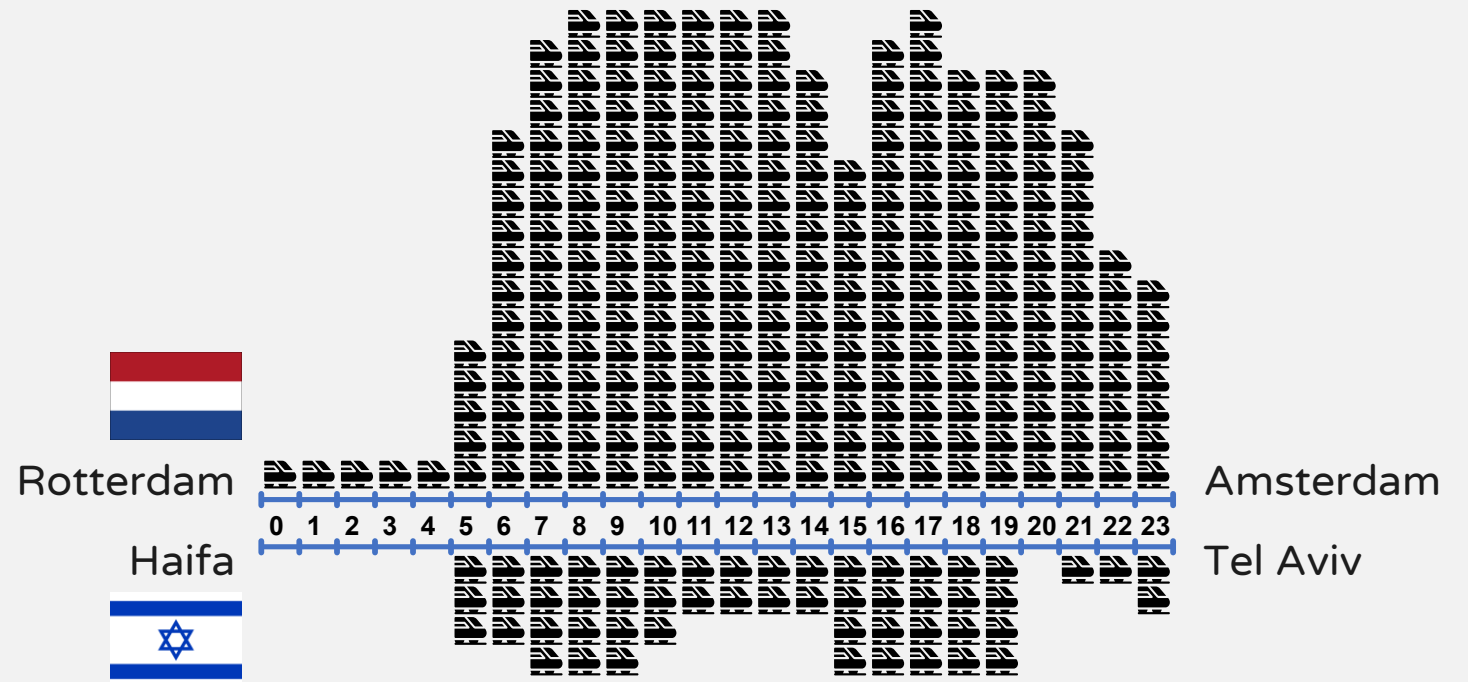
Distribution of motorized trips by travel distance, Cellular survey



Travel In Israel

National Rail

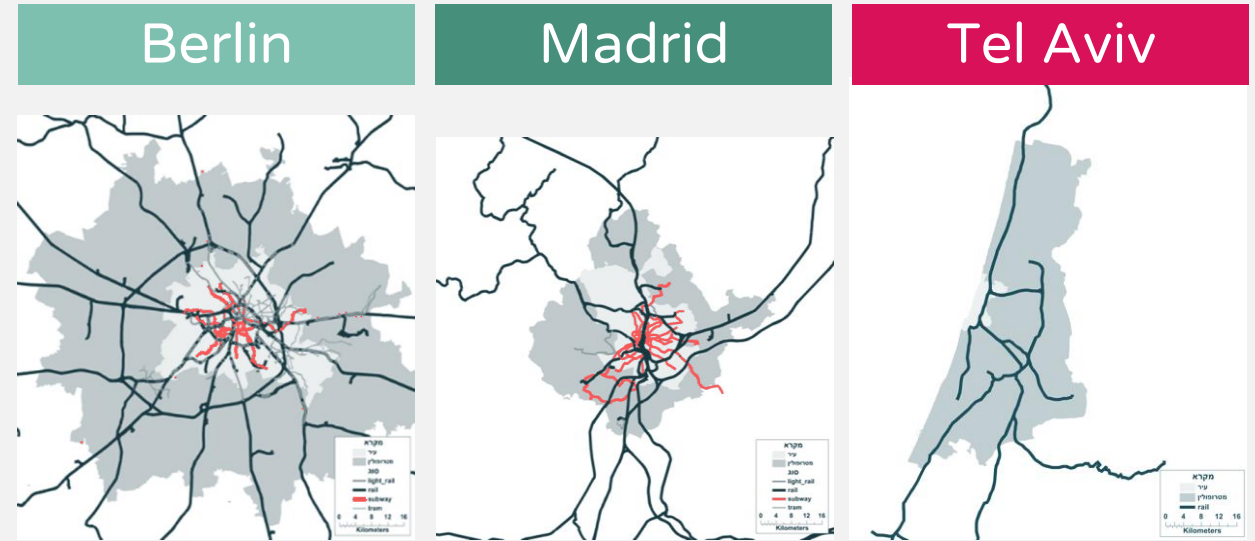
- › Low investment in the system
- › Low frequency
- › Low reliability
- › Crowdedness



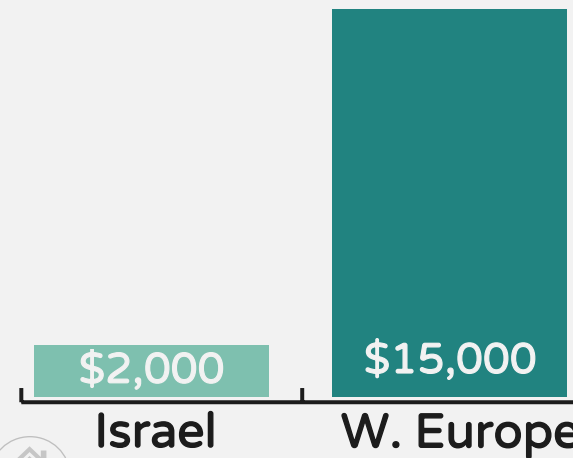
Travel In Israel

Metropolitan Transit

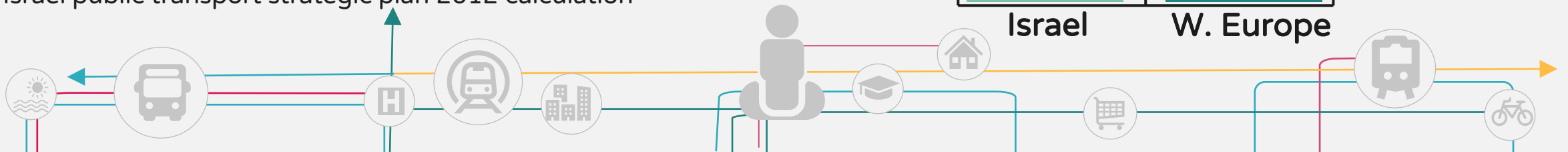
- > Low investment in urban public transport
- > The strategic plan estimated the investment shortage in 2012 as **250** Billion IS



Investment in metropolitan public transport infrastructure per capita*

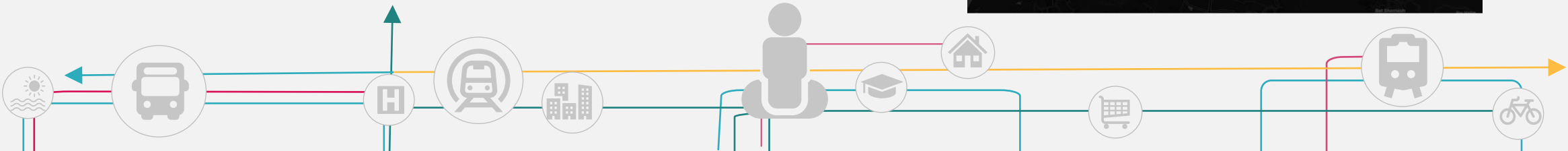
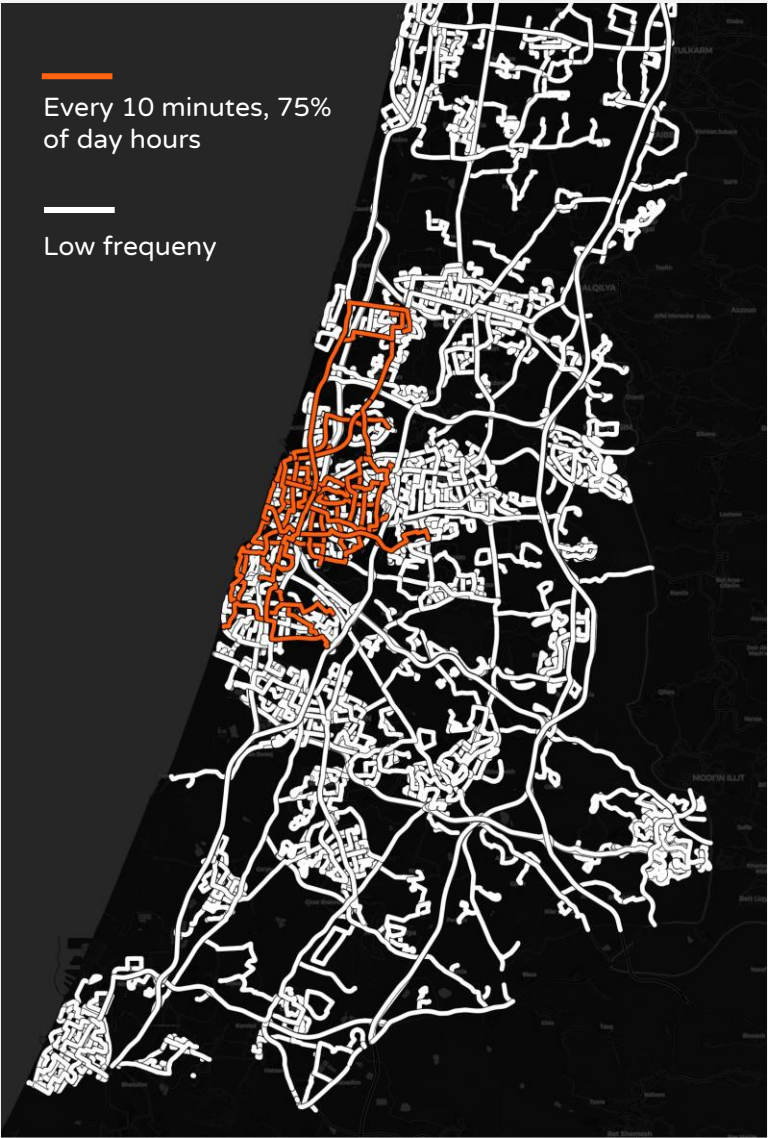
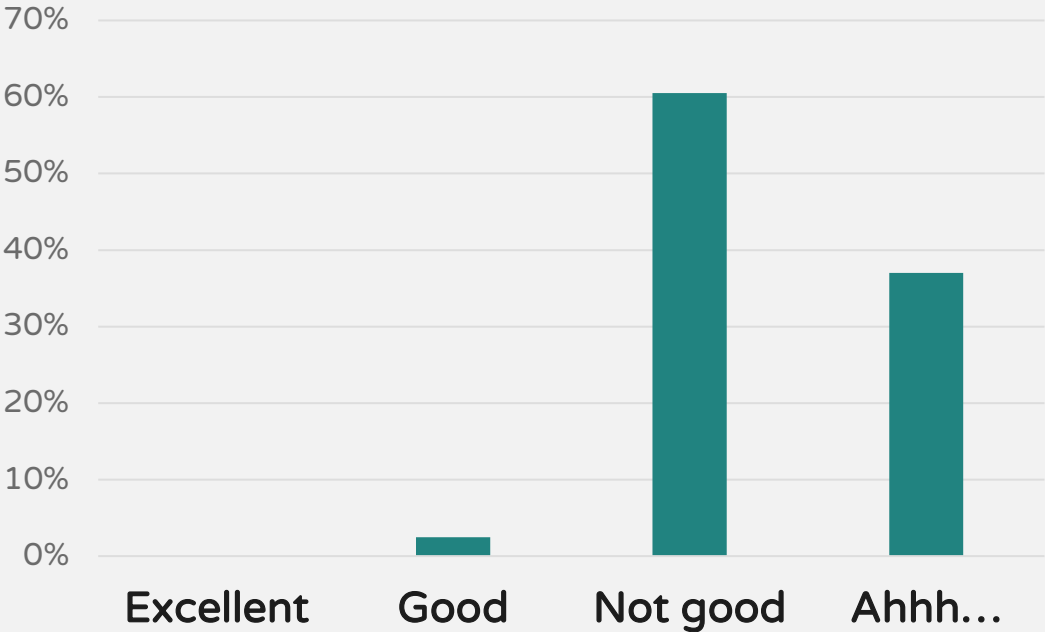


*Israel public transport strategic plan 2012 calculation



Low coverage of frequent bus service

TLV bus line frequency score

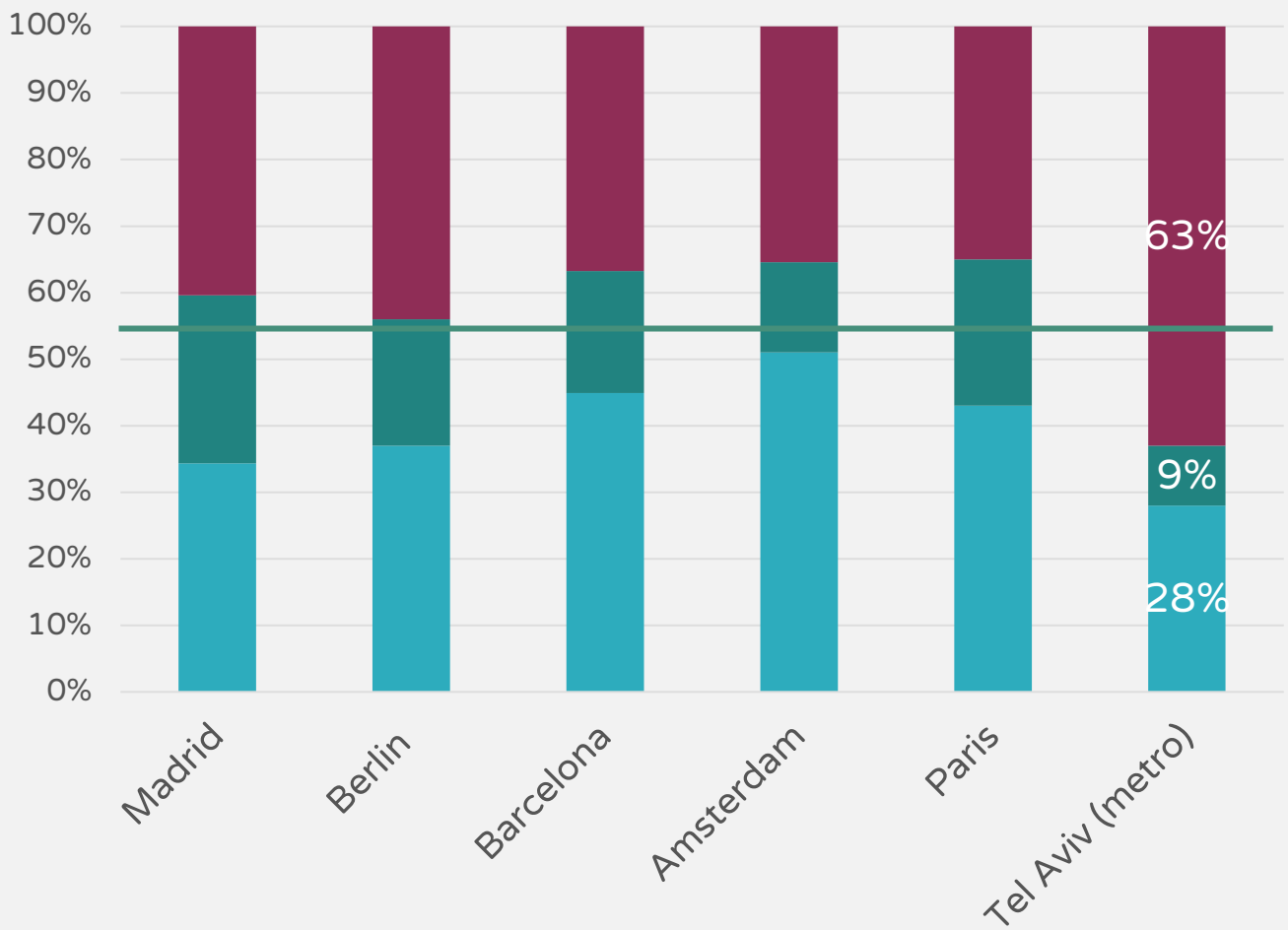


Travel In Israel

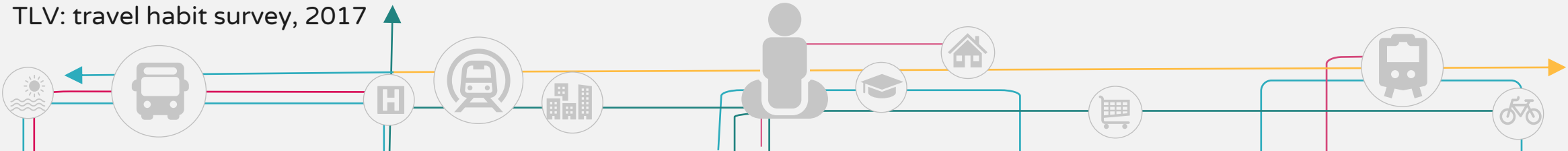
Modal Share

- > Israel metropolitan areas show Low level of sustainable mode share
- > High share of private car trips

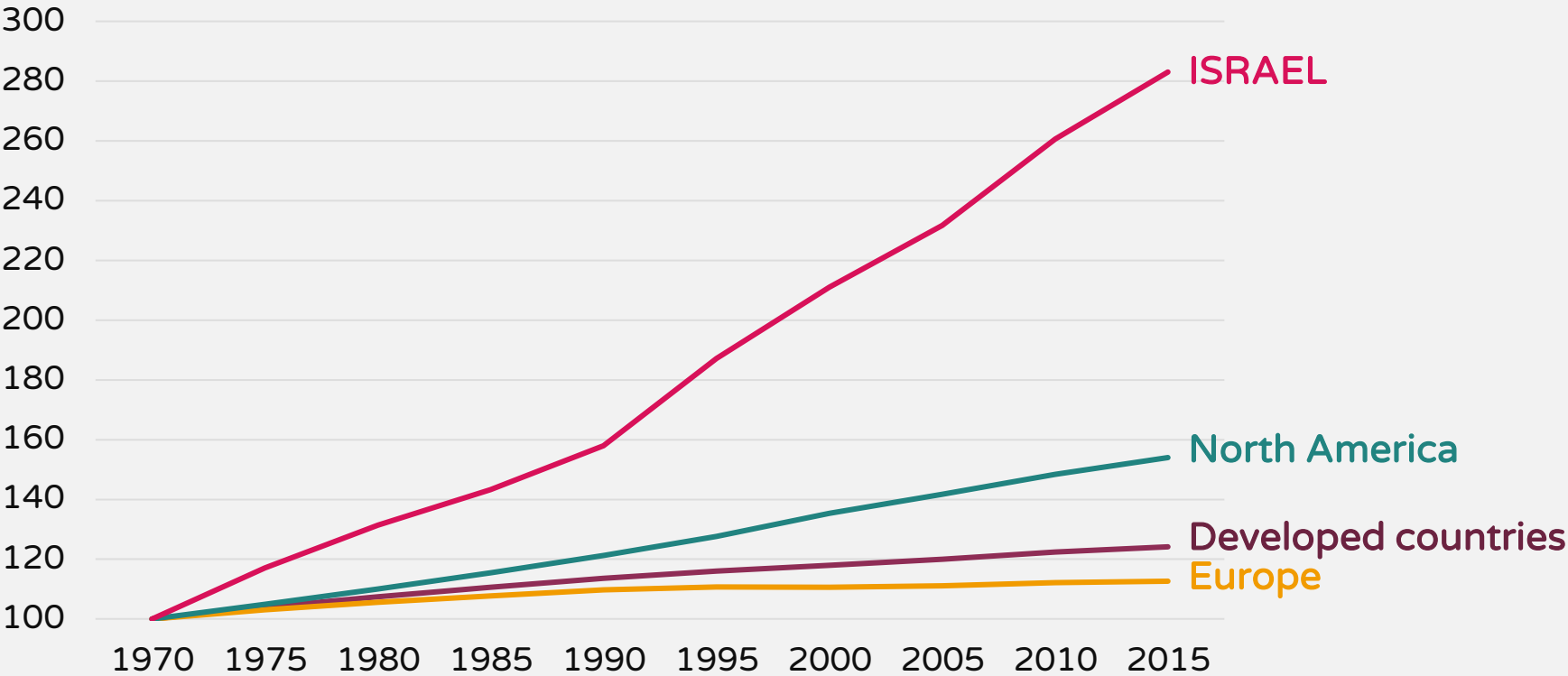
Modal share in PTA area



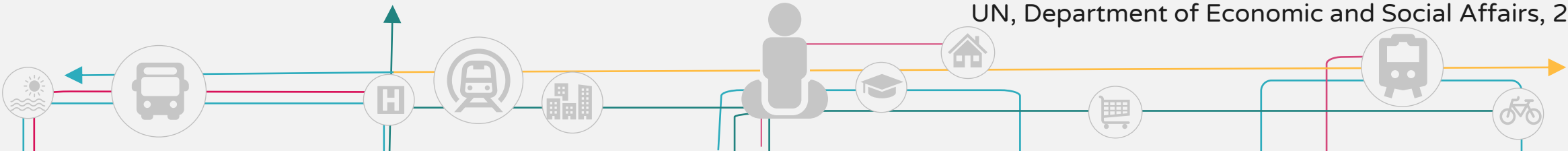
Euro barometer 2020
TLV: travel habit survey, 2017



Population growth rate: **1.9%**
4.5 times OECD average



UN, Department of Economic and Social Affairs, 2017

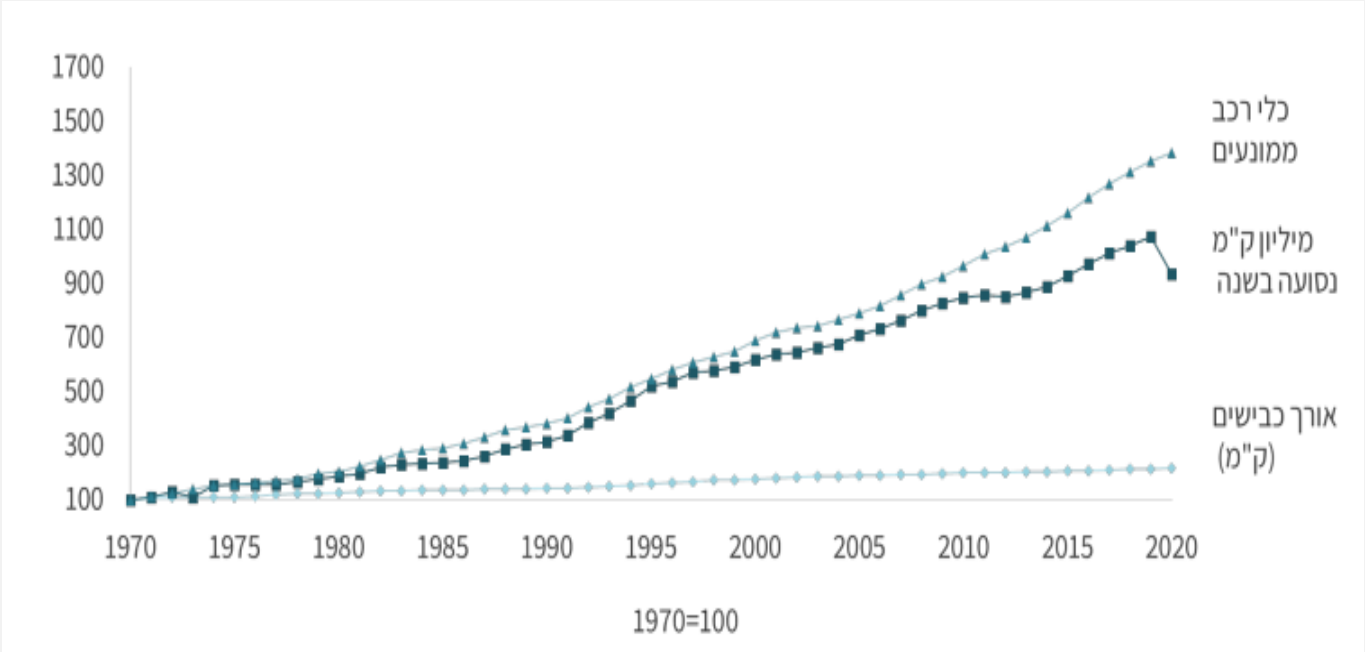


- ◀ The network in 2030 will be significantly more congested than today due to the increase in population, standard of living and number of activities
- ◀ The roads alone cannot keep up with the increasing demand

BAU Scenario



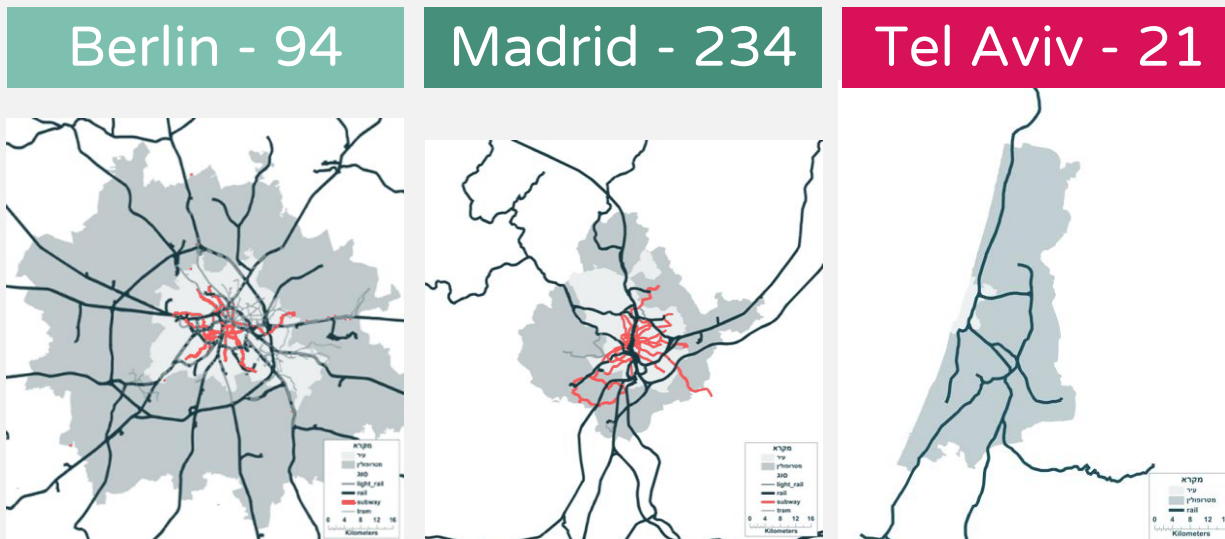
Increase in the length of roads, vehicles and Vkm traveled in Israel, 1970 - 2020



Travel in Israel

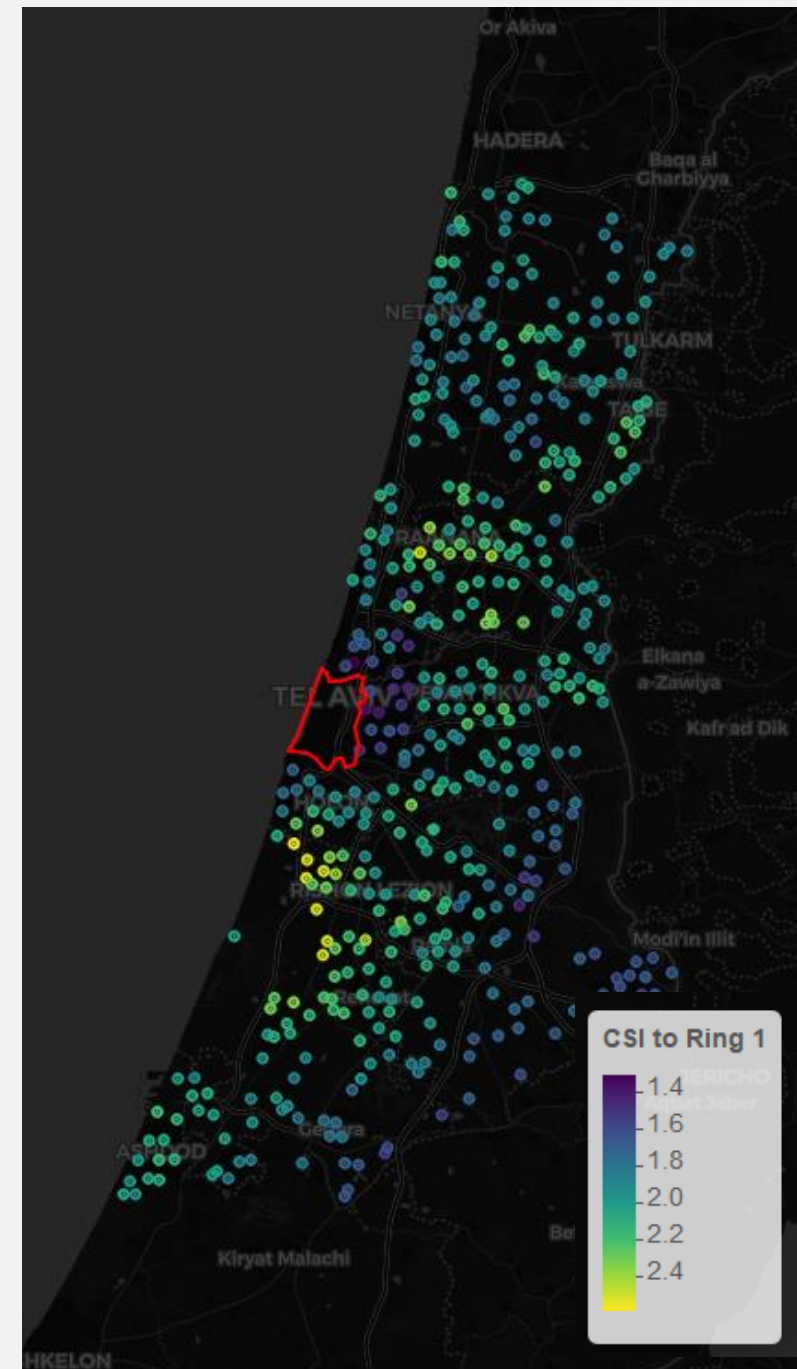
Road Congestion

- Travel time in peak AM is **1.9** times higher than off-peak *
- Tel Aviv is ranked **21** out of 416 cities world-wide in congestion **



*Travel time survey, google data 2022

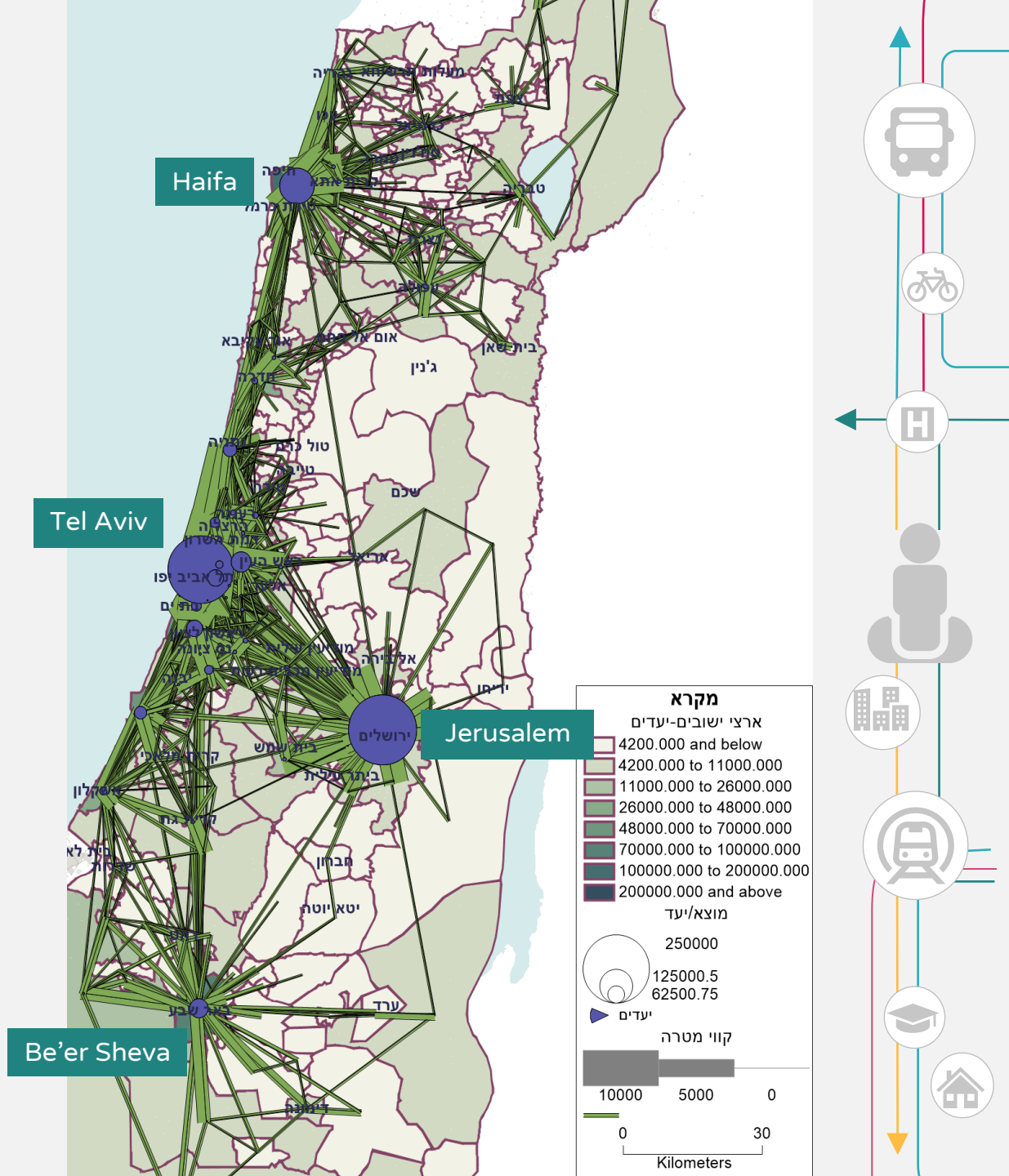
**TomTom Traffic index, 2019



Travel In Israel





National Strategy

- > The strategic plan checked many Scenarios...
- > We found only one solution that works: Hierarchal high-capacity public transport system
- > Accompanied by:
 - > High quality service package
 - > Policy package: Congestion charges, Parking...

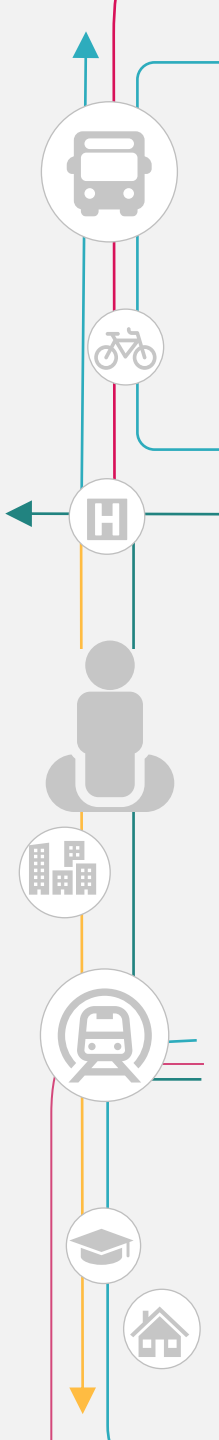




The Strategic
Approach
Goals

| Goal | | Current* | |
|------|---|----------|---|
| 30% | < | 27% |  |
| 10% | < | 1% |  |
| 30% | < | 9% |  |
| 30% | < | 63% |  |
| 70% | < | 37% | Sustainable modes |

Compilation of nation-wide travel habit survey, 2018

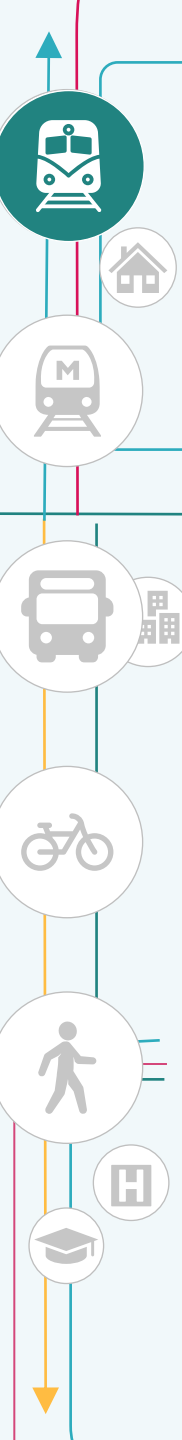




The Strategic
Approach
How?



- › High frequency
 - › Jerusalem - TLV
 - › 2019: 2 trips per hour
 - › 2040: **12** trips per hour
- › Reduce travel time
 - › Haifa -> TLV
 - › 2019: 50 minutes
 - › 2040: **30** minutes
- › Annual passenger trips
 - › 2019: 69 million
 - › 2040: **300-400** million



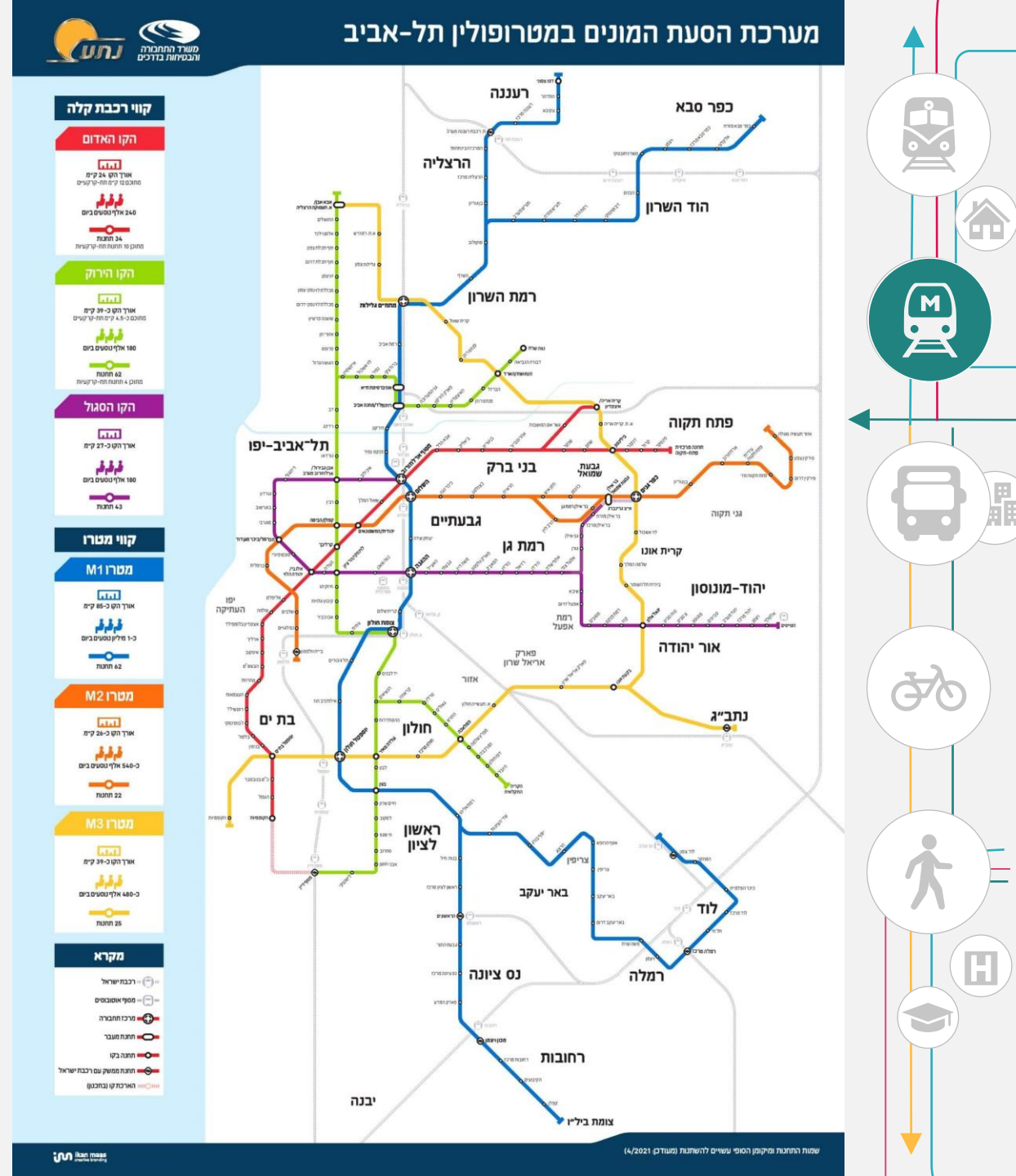
Strategic plan

TLV Mass Transit

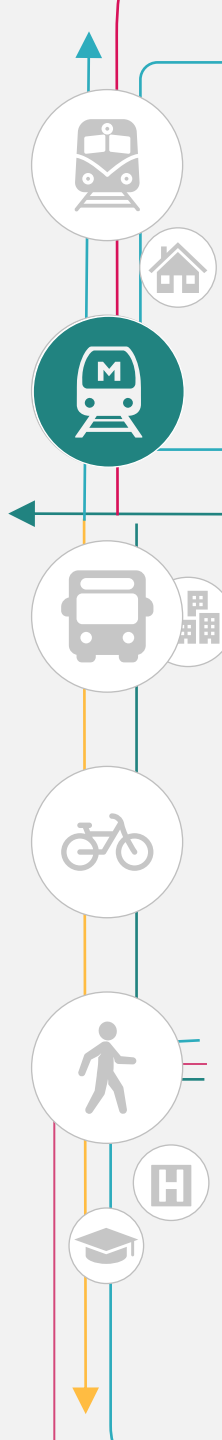
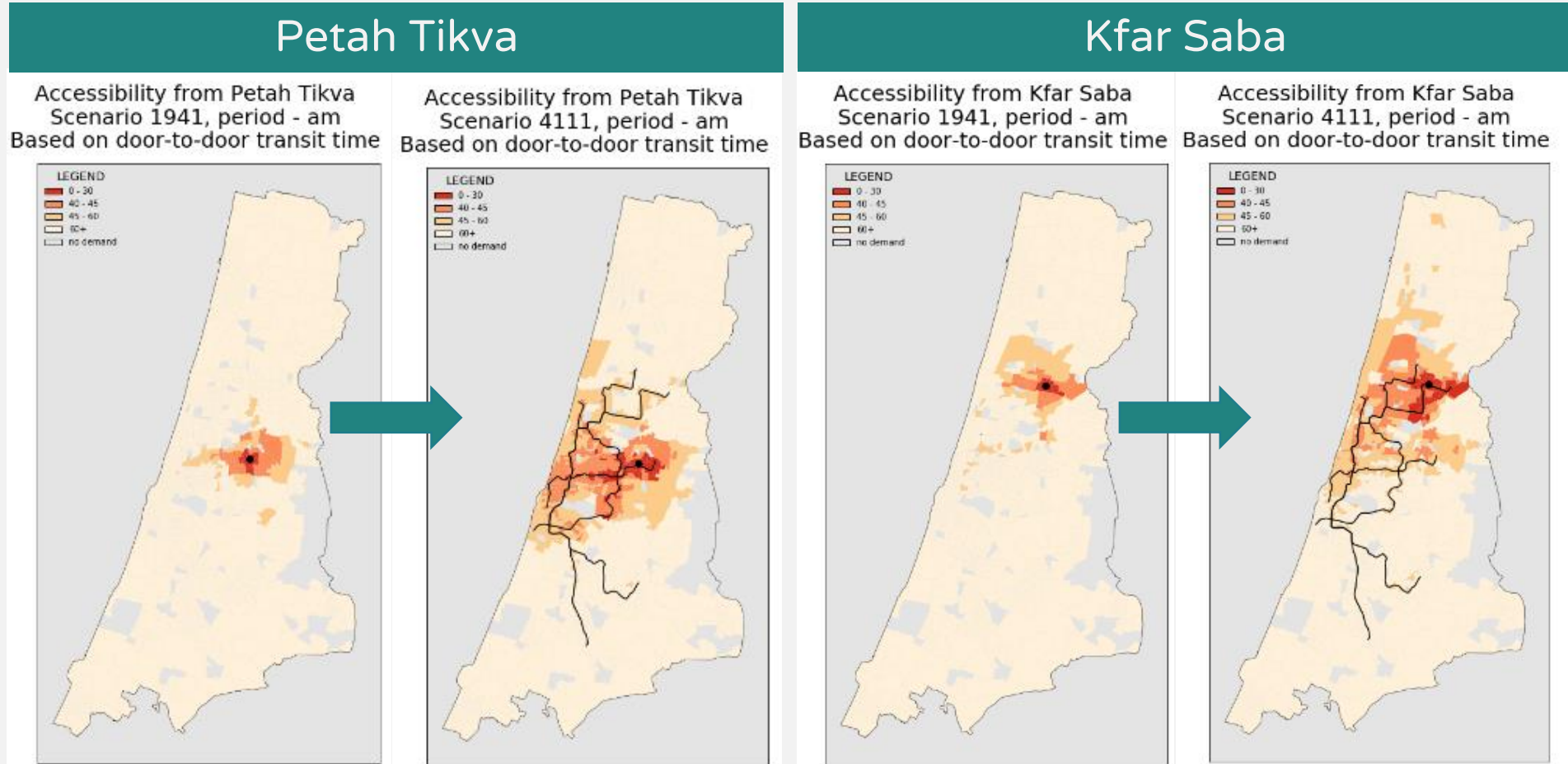
> The TLV metro plan



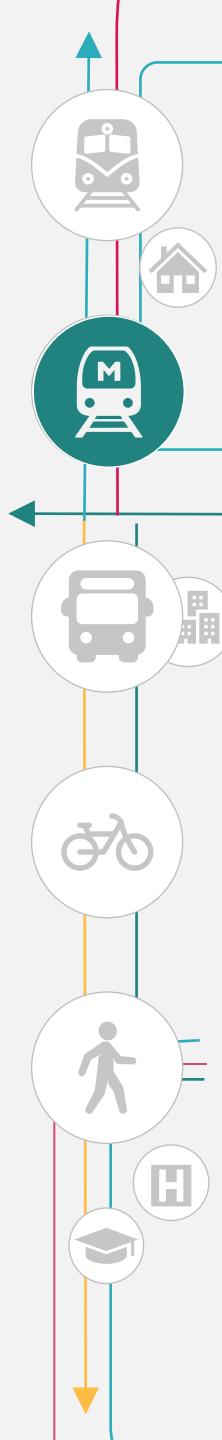
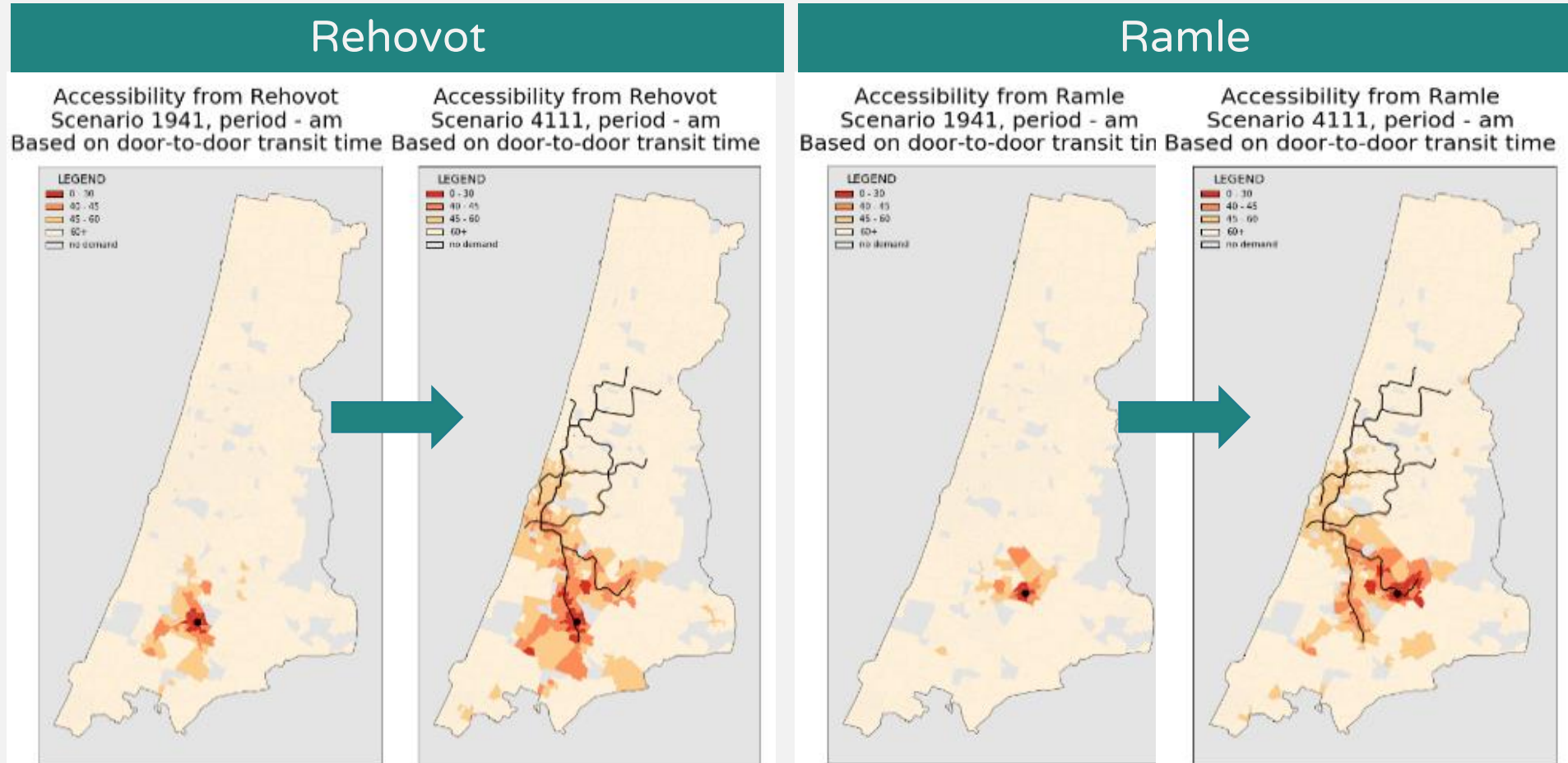
3
Lines
109
Stations
150
km
Serving 24
municipalities
450
million trips
per year



Improved metropolitan accessibility



Improved metropolitan accessibility



Strategic plan
Bus network

Comfortable
stations

Close to home
85% 500 m coverage

Branding

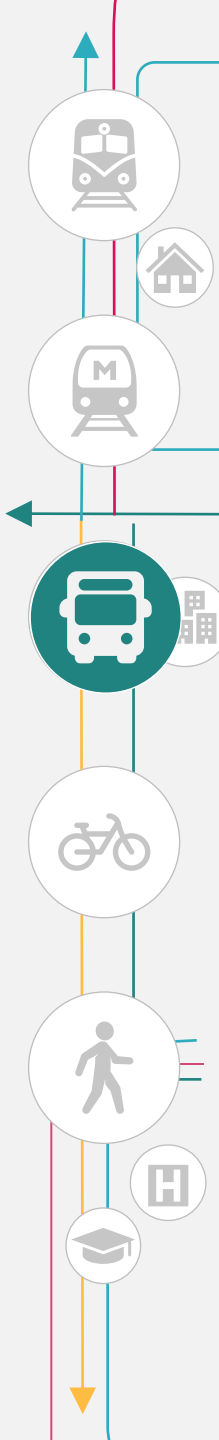
Bus arrives
every
5-8 minutes

Simple
network
25 lines



Priority ride

New electric bus

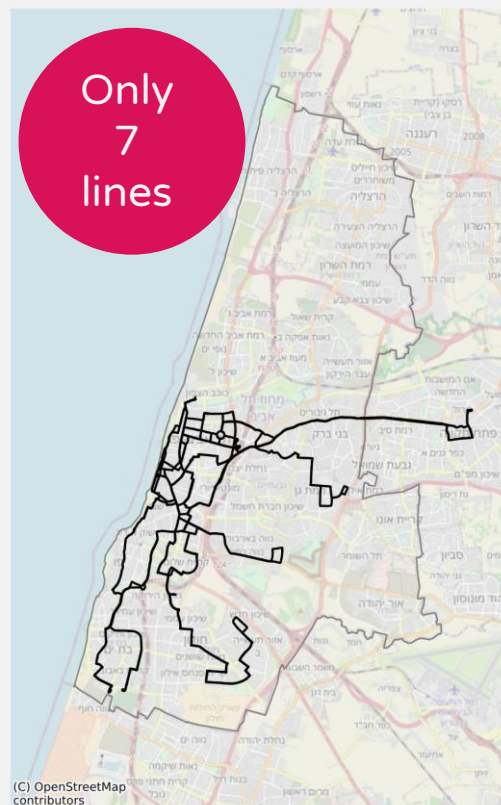


Strategic plan

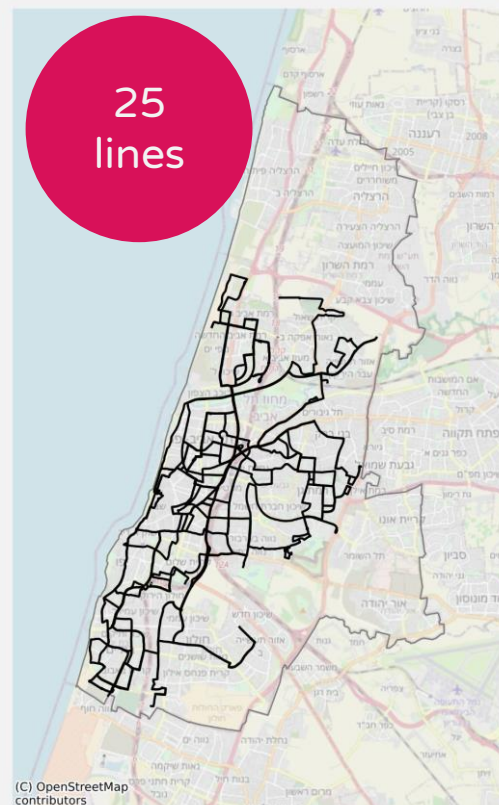
Bus network

Focus on the client : Simple, Frequent, Reliable, Fast, Comfort

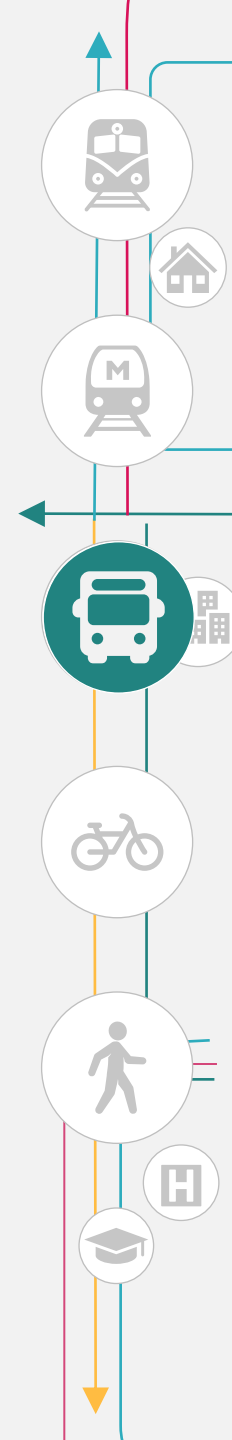
Frequent lines 2022



Strategic Network 2025



Barcelona 28 lines



Strategic plan

Bus network



Before [Cheongnyangni Station Bus Transfer Center]

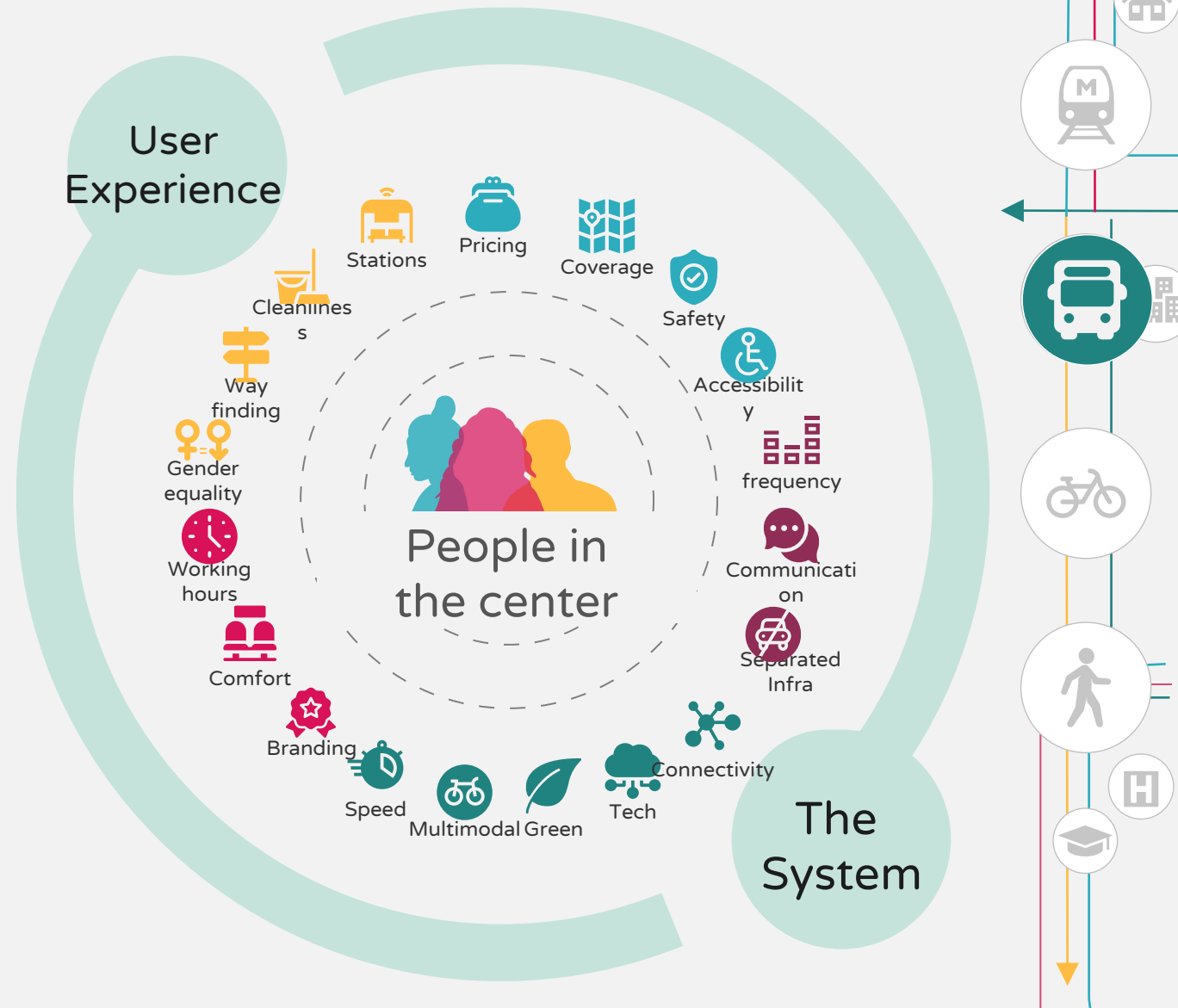


After [Cheongnyangni Station Bus Transfer Center]



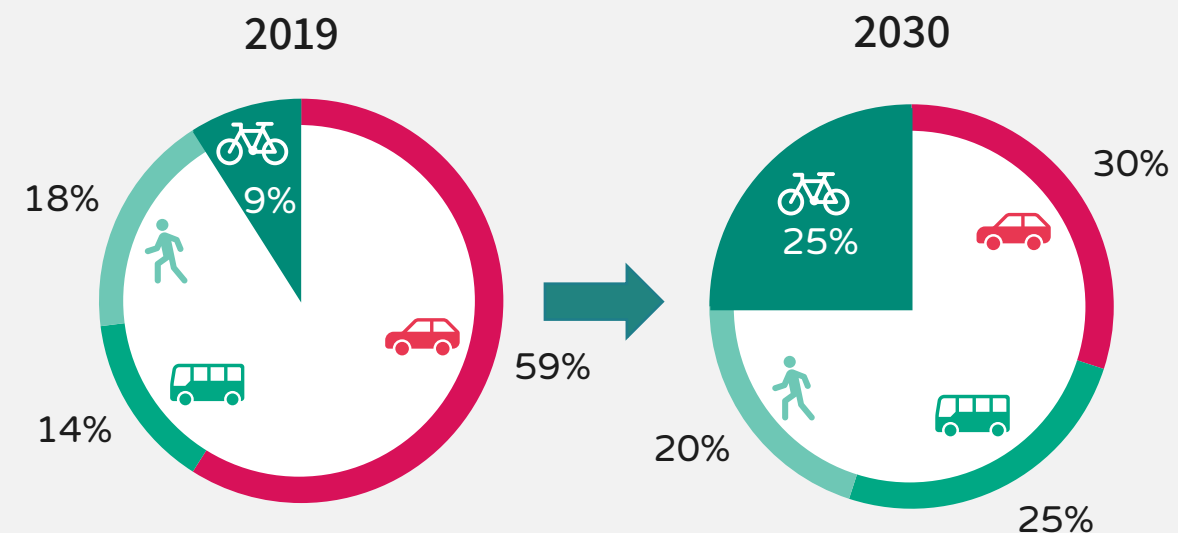
מקור: wxg.co.il

New bus stations in Ashdod

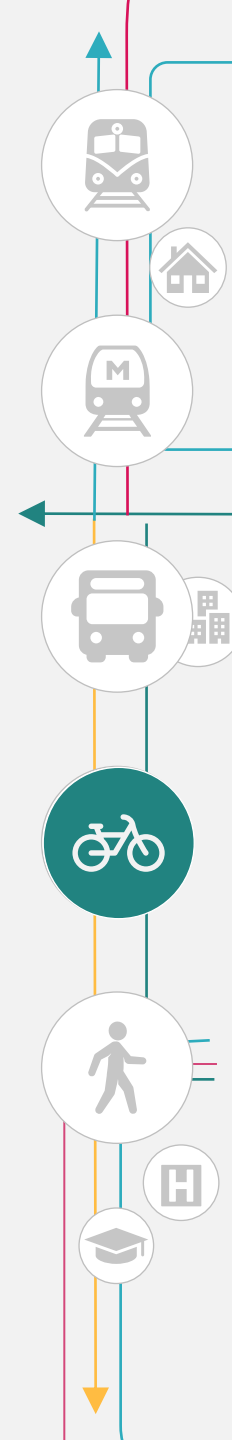
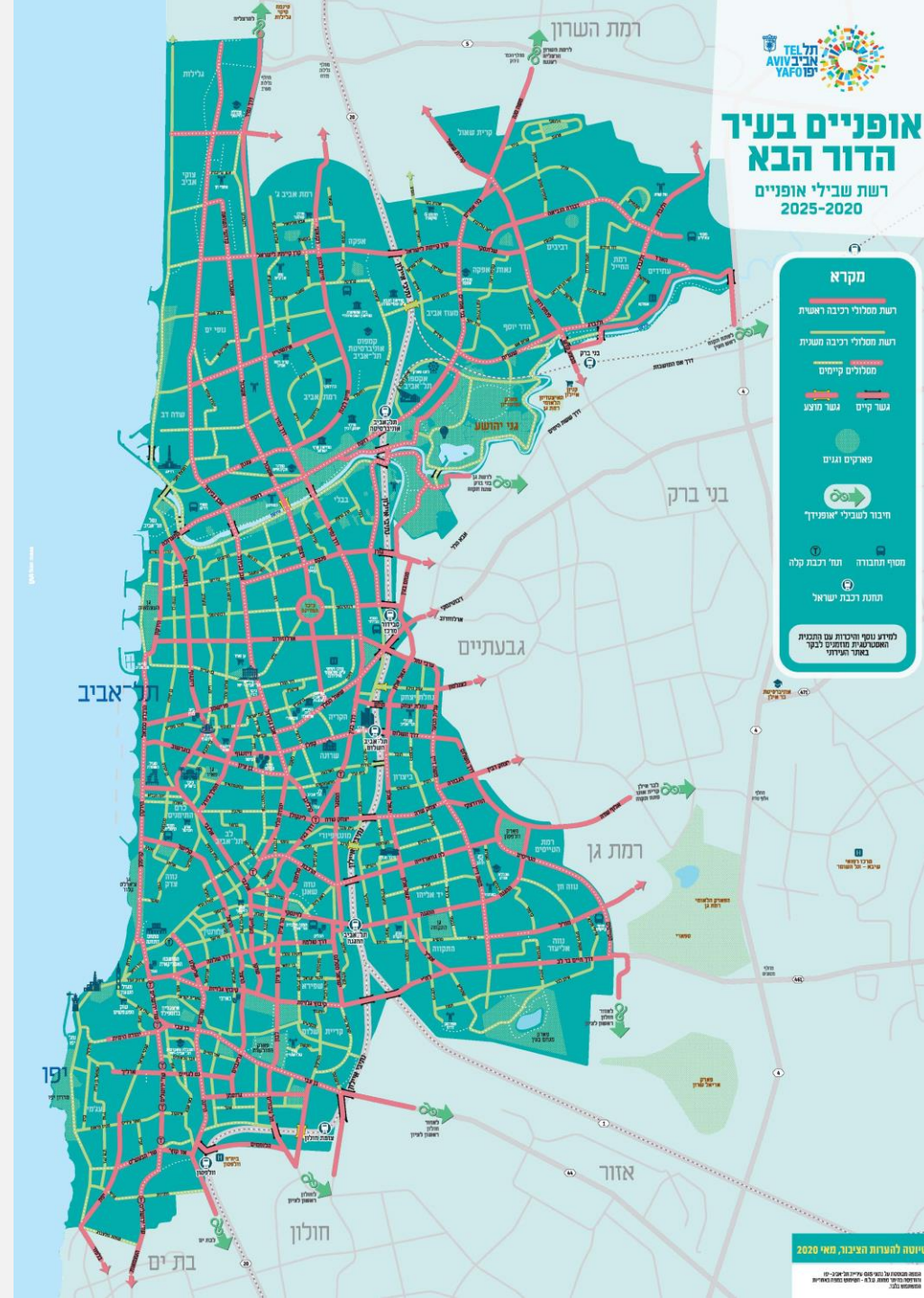


Strategic plan

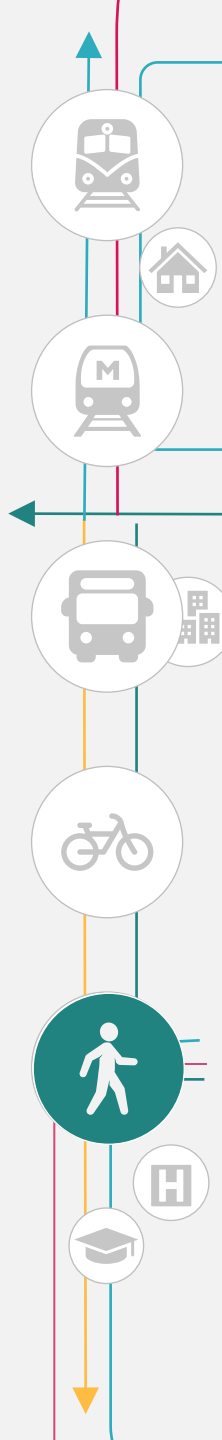
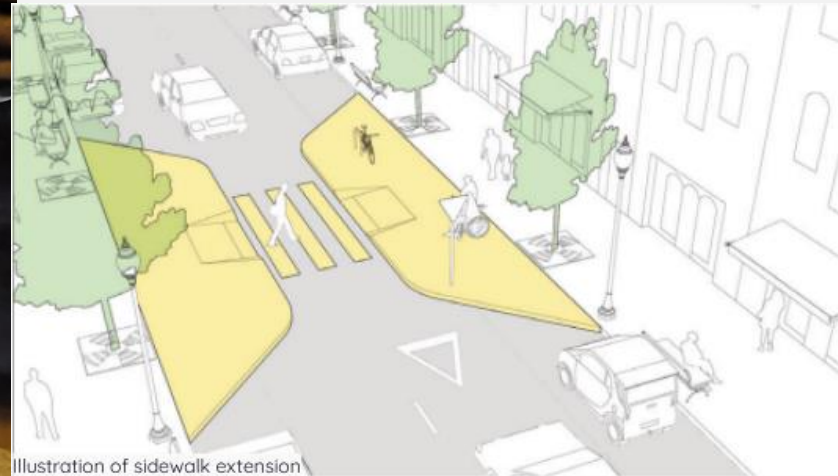
TLV Bike



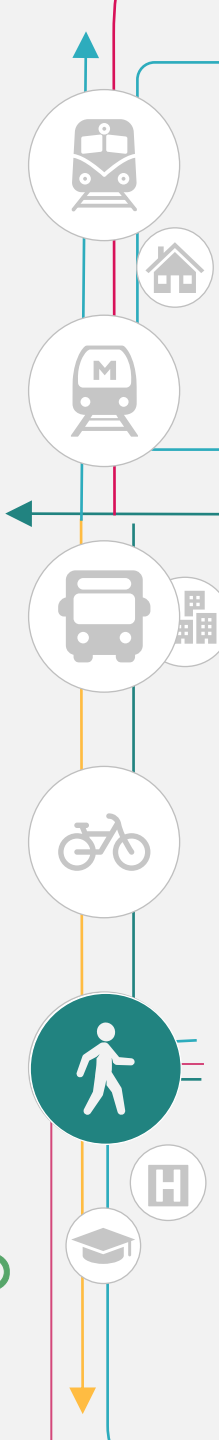
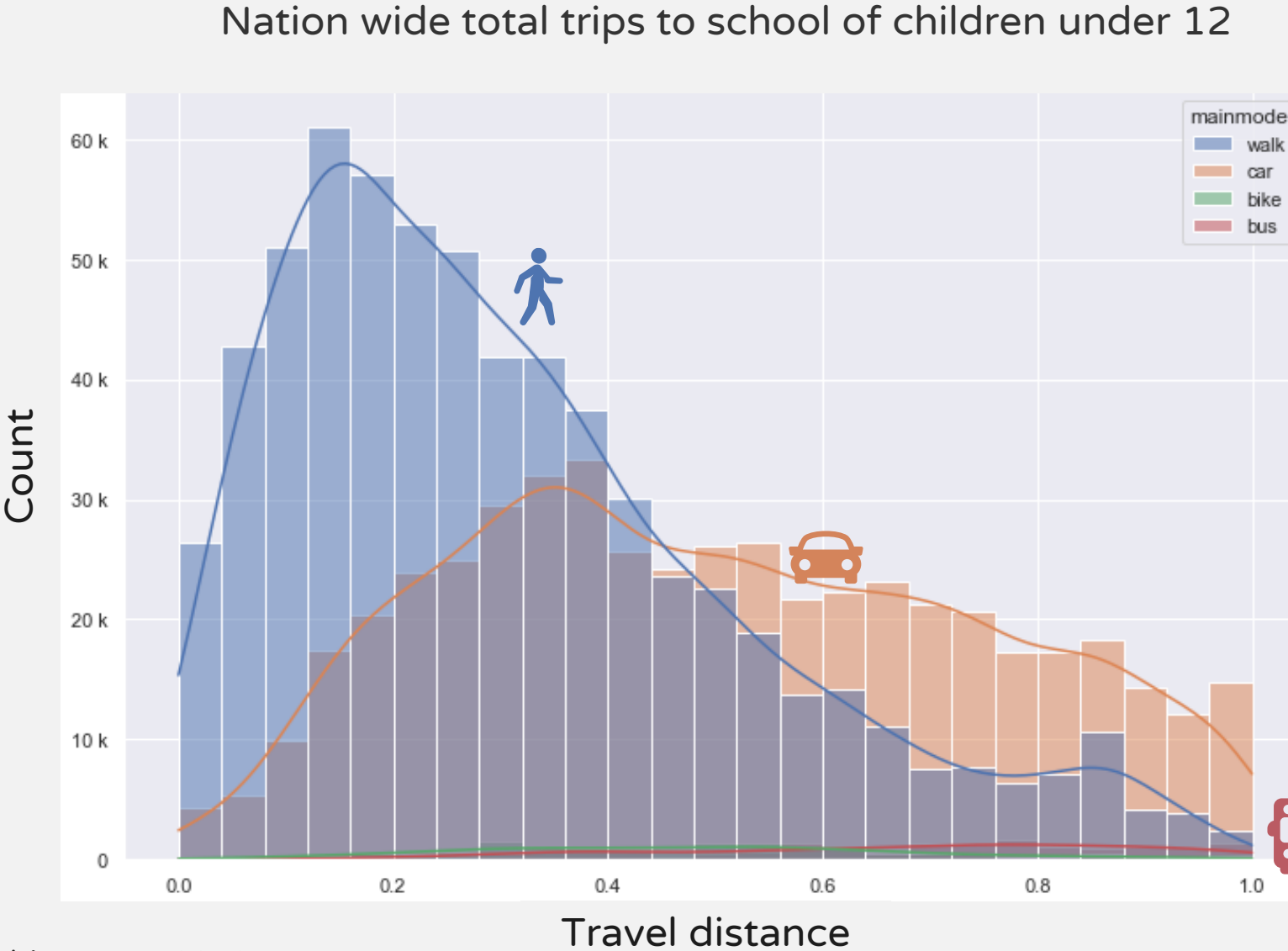
TLV metropolitan travel habit survey 2018



How can we improve walking in our cities?



> Too many
parents drive
their kids to
school...



> Let's ride together



People

improving people's quality of life: accessibility, health, safety ,equality

Mobility

ensuring respectful, efficient, and reliable access for everyone

Space

The creation of a quality, green, and safe urban environment

